



MAJELLIO



Smart Interior Design
For mobile &
modular living

Performance in FRP

The OPTIPLAN GmbH, based in Oelsnitz, Germany, is one of the world's leading developers and manufacturers of fiber-reinforced composite sheets. For over 65 years, we have been developing composites for a wide range of applications – from commercial vehicles to motorhomes and caravans, as well as the construction sector and other industrial segments.

Our aim is to combine functionality and design with the lightness of fiber-reinforced composites. We develop materials that meet the aesthetic demands of architects and designers while also satisfying the highest technical challenges of engineers and technicians.

As a forward-looking company, the future of coming generations is especially close to our hearts. Sustainability is therefore an integral part of our corporate strategy. This includes the development of sustainable products as well as resource-efficient manufacturing processes.



Technical Consultation



Consistent Quality



Fast Supply



Flexibility



Innovation



Product Variety

POLYDET® Prefab

POLYDET® Prefabricated combines the outstanding properties of fiber-reinforced composite cover sheets with aesthetic design materials.

The combination of a decorative surface with FRP offers unique advantages for the interior design of your motorhome or caravan. By incorporating pre-selected and technically tested materials such as textiles, leather or vinyl in our lamination process, we can offer you a prefabricated product that is perfectly suited for walls, floors, and ceilings.

Your Advantages:

- Save time, effort, and costs in your production
- Increased efficiency through single sourcing
- Pre-selected materials and designs in stock
- Combined material expertise for advanced products
- Soft-touch | Sound absorption | Air circulation technology
- Adhesive-free lamination
- Seamless surfaces
- Easy to handle and install

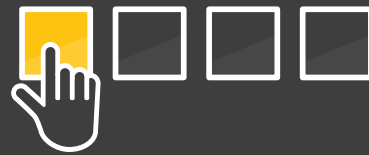


find out more



smart composite kit

Choose your customized product for your application in 4 simple steps.



1. Material



Vinyl | Textile | Woven | Leather

2. Matrix Technology



Resin System

Polyester | Epoxy | Vinylester | r-PET



Reinforcement

Woven Roving | Fine Fabric | Non-Crimp Fabric

3. Additional Features



Moisture Regulating



Sound Absorbing



Soft-Touch

4. Dimensions



Coil

Width: up to 2,800 mm
Length: from 60 m

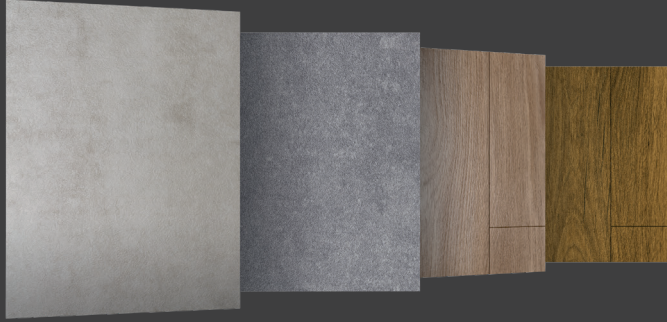


Sheet

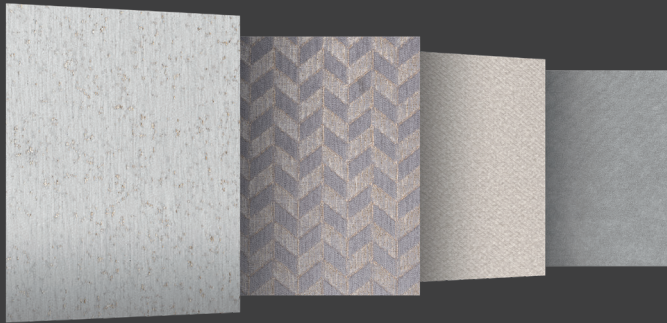
Width: up to 2,800 mm
Length: up to 5 m



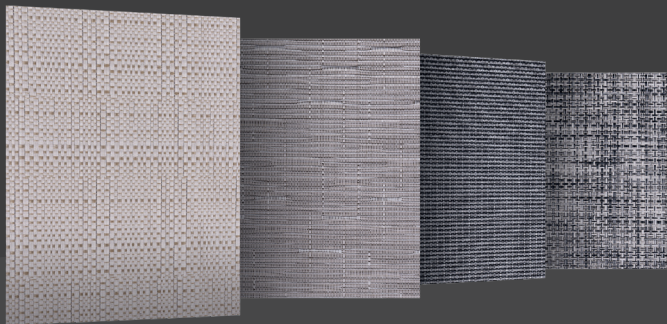
POLYDET® Prefab Vinyl
versatile & easy-care natural decors



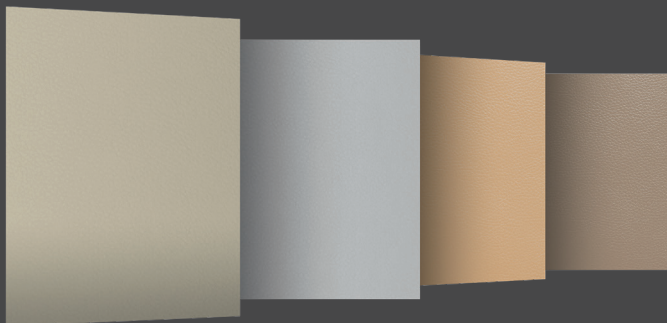
POLYDET® Prefab Textile
warm & appealing textile aesthetics



POLYDET® Prefab Woven
crafted elegance of woven materials



POLYDET® Prefab Leather
luxurious leather look



OPTIPLAN
PERFORMANCE IN FRP





contact us!

 **OPTIPLAN**

Member of  **senata Group**

Am Johannisberg 9–13
08606 Oelsnitz
Deutschland

+49(0)374214940
sales@optiplan.eu
www.optiplan.eu

POLYDET[®]