



OPTIPLAN

innovative lightweight composite solutions.

OPTIPLAN



PERFORMANCE IN FRP



”

We unite materials, resources, ideas, and people across industries to drive sustainable innovations and shared success.

POLYDET®

The highly efficient & durable cover sheet for your lightweight solution.

POLYDET® stands for premium composite materials –made in Germany. Our cover sheets are characterized by outstanding chemical and mechanical properties, making them ideal for a wide range of demanding applications, both interior and exterior.



high-impact



UV-/weather
resistant



dimensionally
stable



chemically inert



corrosion resistant



easy to handle



POLYDET®

Innovative, sustainable, smart!



Transport & Logistics

- Commercial Vehicles
- Trailers
- Tank Containers
- Urban Transport
- ISO-Containers



Application

- interior wall
- exterior wall
- roof
- floor



Recreational Vehicles

- Motor Homes
- Caravans
- Camper Vans



Application

- interior wall
- exterior wall
- roof
- floor



POLYDET®

Innovative, sustainable, smart!



Building & Construction

- Warehouses
- Clean | Cold | Wet Rooms
- Sanitary Facilities
- Food Processing
- Building Renovation

Application

- wall
- facade
- ceiling
- floor
- daylight elements

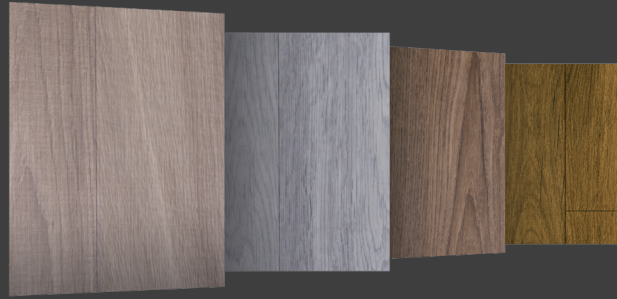


POLYDET® Prefab

POLYDET® Prefabricated – combines the excellent properties of fiber-reinforced cover sheets with aesthetic design materials.

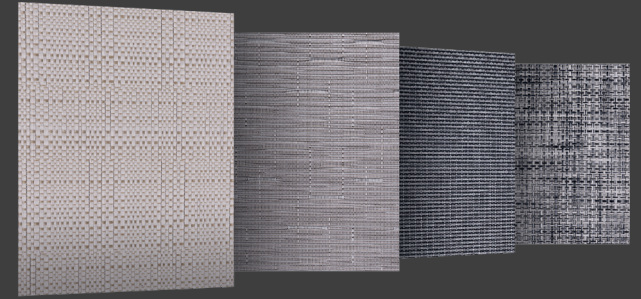
POLYDET® Prefab Vinyl

versatile & easy-care
natural decors



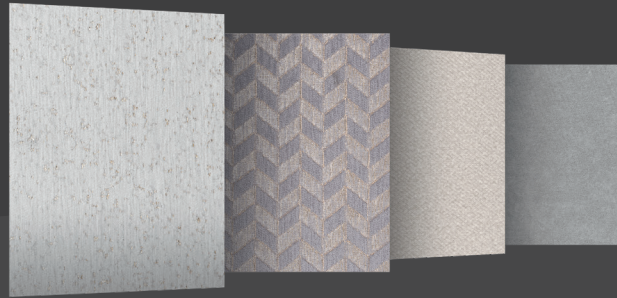
POLYDET® Prefab Woven

crafted elegance
of woven materials



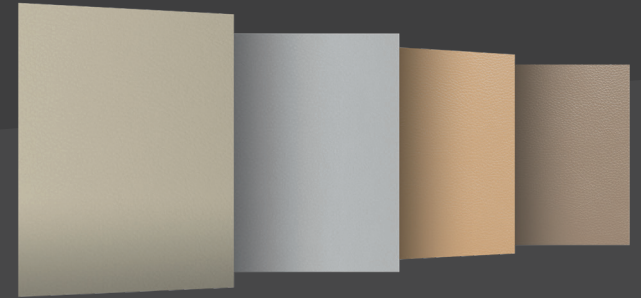
POLYDET® Prefab Textile

warm & appealing
textile aesthetics



POLYDET® Prefab Leather

luxurious leather optics



POLYDET® Prefab

Innovative, sustainable, smart!



Modular & Mobile Living

- Mobile Homes
- Tiny Houses
- Office | Construction | Living Containers
- Building Renovation



Application

- interior wall
- ceiling
- floor



smart composite kit

Choose your customized product for your application in 4 simple steps.



1. Product



Design
smooth
embossed
decor

Color
customized
satin or glossy

2. Matrix Technology



Resin System

Polyester | Epoxy | Vinylester | Phenol



Reinforcement

Woven Roving | Fine Fabric | Non-Crimp Fabric

3. Optional Features



UV-/Weather Resistance



Antibacterial Surface



Fire Resistance Standard



Low Emission



Food Safety

4. Dimensions



Coil

Thickness: 0.7 mm–3.0 mm
Width: up to 3,300 mm
Length: 60 m, 80 m, 120 m, 240 m



Sheet

Thickness: 0.7 mm–5.0 mm
Width: up to 3,300 mm
Length: up to 12 m

Our competencies



Technical
Consultation



Product Variety



Consistent
Quality



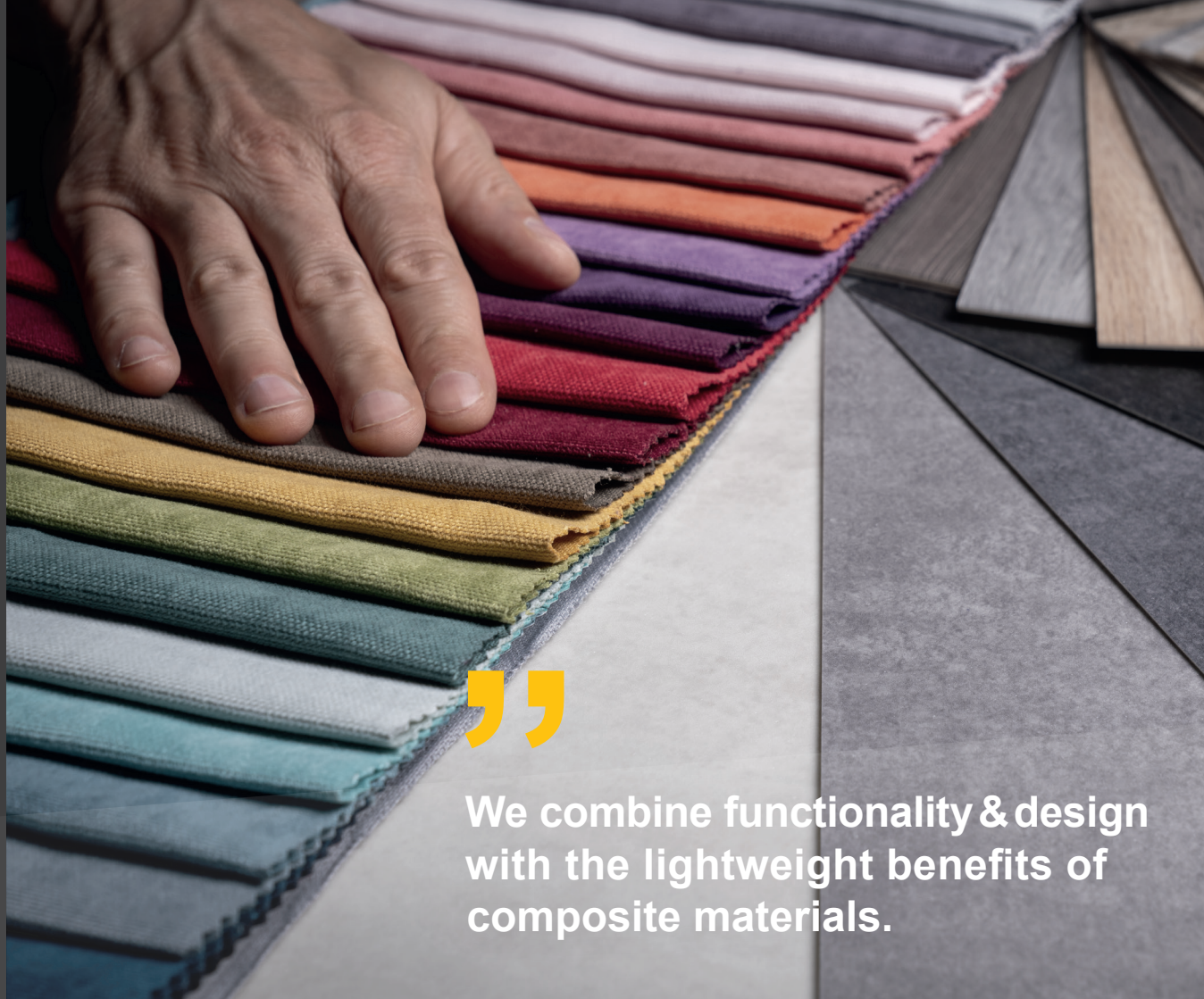
Flexibility



Fast Supply



Innovation



”

We combine functionality & design with the lightweight benefits of composite materials.

Contact



Timo Hoffmann
Director of Sales
North America | USA | Canada

Tel.: +49 37421 494 34
Mail: timo.hoffmann@optiplan.eu



Marcel Müller
Sales Manager
Germany | Austria | Switzerland

Tel.: +49 37421 494 41
Mail: marcel.mueller@optiplan.eu



Viktor Dill
International Sales Manager
Scandinavia | Benelux | UK/Ireland |
Southern Europe | Middle East |
Australia/New Zealand

Tel.: +49 37421 494 35
Mail: viktor.dill@optiplan.eu



Pawel Dzwonnik
Area Sales Manager
Eastern Europe | Baltic States

Tel.: +49 172 62 79 770
Mail: pawel.dzwonnik@optiplan.eu



Robert Garbe
International Sales Manager
Southeast Asia | South America |
France

Tel.: +49 37421 494 33
Mail: robert.garbe@optiplan.eu





Member of  **senata** Group

OPTIPLAN GmbH | Am Johannisberg 9 – 13 | 08606 Oelsnitz | Germany
+49 37421 494 -0 | info@optiplan.eu | www.optiplan.eu